



Severe Weather Guidelines (based on States Education Policy)

General Principles

Schools should remain open in severe weather conditions unless:

- a) Travel is impracticable and/or too hazardous.
- b) The school buildings are unusable through damage and/or failure of essential on-site services.
- c) The number of staff able to reach a particular school is inadequate to run it, even on an emergency basis (under 40% of strength).

Transport

The Island can be divided into two geographical areas separated by a line running approximately from the Longstore in the east to the southern end of Cobo Bay in the west. To the north of this line is relatively flat ground, generally negotiable with care in all but the most extreme conditions. To the south is high ground accessible only after climbing fairly steep hills which, in snow or icy conditions, quickly become impassable to vehicles. In such conditions, therefore, transport will normally only be immediately available to try and service the northern part of the island. Pupils and staff in the south will, in the main, have to travel on foot.

Alternative Plans Of Action

Specific announcements will be made by Radio Guernsey & Island FM on behalf of the Department of Education, with either all schools open, named schools closed, or all schools closed. The school website will also publicise any information about school closure. *Please note it is most likely that the College will be closed if the Education Department, on the advice of the island's relevant professional agencies (see Appendix A), has decided to close all State Schools.*

When severe weather occurs overnight, announcements will be made on the radio stations above from 7.15am at the latest. When severe weather conditions arise during the school day, announcements will be made as soon as decisions are taken and regularly thereafter. Please note it may be necessary to send pupils home during the day in light of a particularly hazardous forecast.

Additional Notes

- a) Individual teachers may be requested to attend a school closer to their home in order that adequate cover is maintained.



ELIZABETH COLLEGE

b) In all cases where pupils are 'expected to walk', parents may use their discretion to keep a child at home if they believe that conditions are such as to make it unreasonable or unsafe for the child to attempt to reach school.

c) In all cases where teachers are 'expected to walk', exceptions will be made for those who are unable to do so for medical or other good reasons.

Responsibility for Action

a) The sources of information on which decisions will be based in severe weather and adverse road conditions are shown in Appendix A.

b) The decision on which alternative plan of action to follow will be taken by the Minister for Education, on the advice of the Director of Education, as shown in Appendix B.

That decision will be based not only on information received from the Fleet Supervisor, but also on reports from the Headteachers and/or caretakers of each school made to the Administrative Officer (Education).

c) While these guidelines apply principally to action required when severe weather conditions occur overnight, the same procedures will be followed with regard to sources of information, chain decisions, and announcements of plans of action when severe weather conditions occur during the school day.

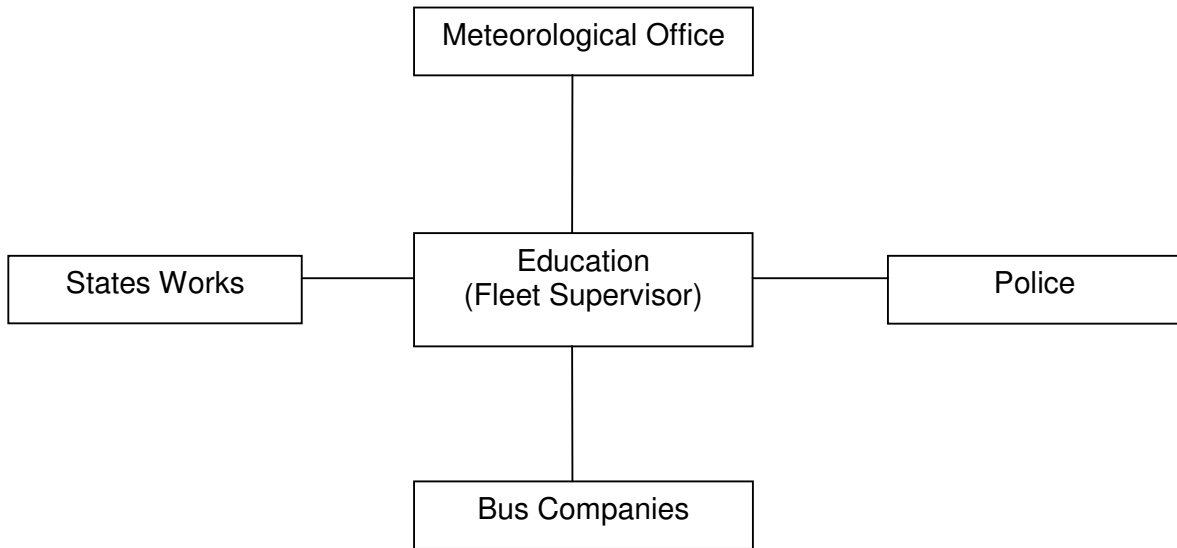
Information to Staff, Pupils & Parents

It is the responsibility of each school to ensure its staff, pupils and parents know and understand these guidelines.



APPENDIX A

Severe Weather & Road Conditions Information Sources





APPENDIX B

Decision Chain for Schools & School Transport

